

MINCO

SUGGESTED INSTALLATION PROCEDURE TEMPERATURE DETECTOR IN THRUST BEARING CASE STYLE B, BABBITT METHOD

1.0 SUGGESTED INSTALLATION PROCEDURE:

NOTE: For easier installation, sensors may be purchased with babbitt tips already applied. See specification drawings for complete details.

- 1.1 Drill a 3/16" (4.75mm) diameter hole (axially through the babbitt layer and bearing shoe in the desired location.
- 1.2 Counterbore a .255/.265" (6.50/6.7mm) diameter hole through the babbitt layer. Break or chamfer corners to remove sharp edges.
- 1.3 Mill a groove in back of the bearing shoe 1/8" (3.20mm) wide by 3/16" (4.75mm) deep. The groove should extend from the 3/16" (4.75mm) diameter hole to where the leadwires exit the bearing. Terminal connecting points must be located within the leadwire length of the temperature detector being installed.
- 1.4 Thoroughly clean machined surfaces so they are free of oil, chips, etc. Also, make sure the temperature detector case is clean.
- 1.5 Insert temperature detector leadwires in the .255/.265" (6.50/6.75mm) diameter counterbored hole: extend them through the 3/16" (4.75mm) diameter hole in the bearing shoe. Carefully draw the leadwires through the hole: make certain they are not kinked or damaged. **DO NOT** pull the leadwires to seat the temperature detector in the .255/.265" (6.50/6.75mm) diameter hole. Gently guide the detector into the hole and press into place. The case shoulder will seat on the bearing shoe when the detector is properly in place.
- 1.6 Fill the hole above the detector with shavings or small pieces of babbitt. Use enough babbitt to cover the end of the detector and extend slightly above the bearing surface after melting.

DR: JEH 5-12-95
CHK: BAM 5-12-95
APP: BAL 5-12-95
ENG: BAM 9-19-00

MINCO PRODUCTS, INC.
7300 Commerce Lane
Minneapolis, MN 55432
Phone (763) 571-3121
FAX: (763) 571-0927
CAGE No. 09359

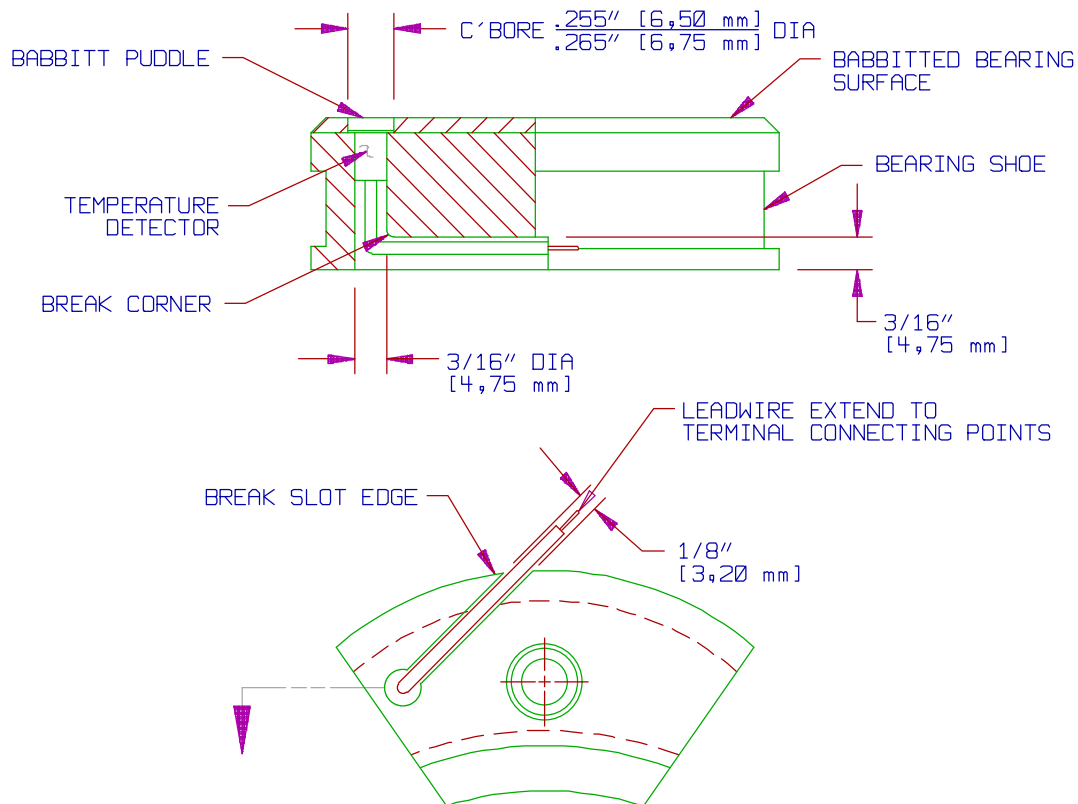
Engineering Instruction #180

ECO# 36240 Rev. D

PAGE 1 OF 2

- 1.7 Using a small gas flame, heat and melt the edge of the babbitt layer surrounding the detector tip. **DO NOT** allow the flame to contact the detector case. **DO NOT** concentrate the flame on one place for any length of time. **KEEP THE FLAME MOVING.** The Babbitt must be melted to fusion-bond to the detector case, but must not be heated to a temperature that will damage the detector. The detector may be exposed to temperatures as high as 572°F (300°C) for short periods of time. If necessary, add babbitt to fill the hole flush or slightly above the bearing surface.
- 1.8 Scrape off excess babbitt and dress to provide a smooth, unbroken bearing surface.
- 1.9 Lay leadwire flat in the bottom of the milled groove in the bearing shoe. Pot the leadwire in the groove using an epoxy or other suitable potting compound compatible with the bearing shell material, temperature, and service conditions.

NOTE: Although the illustration below depicts a thrust bearing, the above installation procedure can be used with other types of bearings and also with equipment other than bearings.



MINCO
 PRODUCTS, INC.
 Minneapolis, MN

SUGGESTED INSTALLATION
 PROCEDURE TEMPERATURE
 DETECTOR IN THRUST
 BEARING CAST STYLE B,
 BABBITT METHOD

Engineering Instruction 180
 Rev. D Page 2 of 2