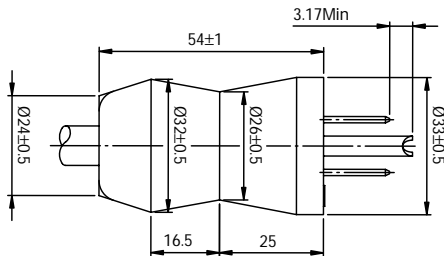


# Domestic Hospital Grade Cordsets, 3 Conductor



## Features:

- Blue tinted transparent plug body
- One piece molded plug body - resists moisture, heat, crushing
- U-Shaped ground pin - resists bending
- Plug is designed with a user friendly shape and texture to insure a positive grip
- Metal strain - relief molded inside plug secures cord within plug body
- Blades and ground pin soldered to conductors
- SJT VW-1 cordage
- UL listed / CSA certified

## Hospital Grade (Green Dot) Nondetachable with NEMA 5-15P Grounding Plug

Outer jacket removed 2", conductors stripped 5/8"



Part No.	Cord Length		Conductor		Nominal O.D.		Power Rating	Cord Type / Temp	Plug No.			
	Ft	M	AWG.	Strand	Inch	mm			Male	Fem.	Color Code	Jacket Color
IPC-90001C	8'	2.4	18	41 x 34	.315	8.0	1250 Watts 10A @ 125V	SJT / 105°C	LP-20	---	NA	Gray
IPC-90002C	10'	3.0	18	41 x 34	.315	8.0	1250 Watts 10A @ 125V	SJT / 105°C	LP-20	---	NA	Gray
IPC-90003C	8'	2.4	16	67 x 34	.335	8.5	1625 Watts 13A @ 125V	SJT / 105°C	LP-20	---	NA	Gray
IPC-90004C	12'	3.7	16	67 x 34	.335	8.5	1625 Watts 13A @ 125V	SJT / 105°C	LP-20	---	NA	Gray
IPC-90064A	8'	2.4	14	41 x 30	.38	9.7	1875 Watts 15A @ 125V	SJT / 105°C	LP-20	---	NA	Gray
IPC-90065A	10'	3	14	41 x 30	.38	9.7	1875 Watts 15A @ 125V	SJT / 105°C	LP-20	---	NA	Gray

## Note:

Standard cords are supplied with blue tinted transparent molded plugs and grey outer jacket.

Other jacket colors available.

Plugs are also available in solid black, white, and grey to coordinate with cord jackets.

(For custom colors a minimum quantity may be required.)

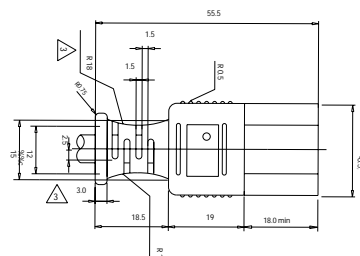
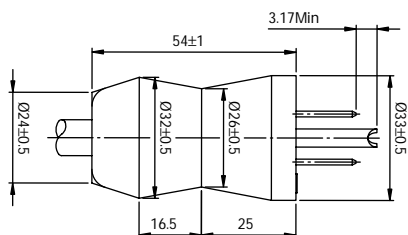


Call Toll Free: 1-800-341-3533

Telephone: (952) 835-2322

Fax: (952) 835-5080

# Domestic Hospital Grade Cordsets, 3 Conductor, Detachable



## Features:

- Blue tinted transparent plug body
- One piece molded plug body - resists moisture, heat, crushing
- U-Shaped ground pin - resists bending
- Plug is designed with a user friendly shape and texture to insure a positive grip
- Metal strain - relief molded inside plug secures cord within plug body
- Blades and ground pin soldered to conductors
- SJT VW-1 cordage
- UL listed / CSA certified

## Hospital Grade (Green Dot) Detachable with NEMA 5-15P Grounding Plug & IEC 320 Connector



Part No.	Cord Length		Conductor		Nominal O.D.		Power Rating	Cord Type / Temp	Plug No.			Jacket Color
	Ft	M	AWG.	Strand	Inch	mm			Male	Fem.	Color Code	
IPC-90005C	6'7"	2.0	18	41 x 34	.315	8.0	1250 Watts 10A @ 125V	SJT / 105°C	LP-20	LS-13	NA	Gray
IPC-90006C	8'	2.4	18	41 x 34	.315	8.0	1250 Watts 10A @ 125V	SJT / 105°C	LP-20	LS-13	NA	Gray
IPC-90007C	10'	3.0	18	41 x 34	.315	8.0	1250 Watts 10A @ 125V	SJT / 105°C	LP-20	LS-13	NA	Gray
IPC-90008C	8'	2.4	16	67 x 34	.335	8.5	1625 Watts 13A @ 125V	SJT / 105°C	LP-20	LS-13	NA	Gray
IPC-90009C	10'	3.0	16	67 x 34	.335	8.5	1625 Watts 13A @ 125V	SJT / 105°C	LP-20	LS-13	NA	Gray
IPC-90062A	8'	2.4	14	41 x 30	.38	9.7	1875 Watts 15A @ 125V	SJT / 105°C	LP-20	LS-13	NA	Gray
IPC-90063A	10'	3.0	14	41 x 30	.38	9.7	1875 Watts 15A @ 125V	SJT / 105°C	LP-20	LS-13	NA	Gray

## Note:

Standard cords are supplied with blue tinted transparent molded plugs and grey outer jacket. Other jacket colors available. Plugs are also available in solid black, white, and grey to coordinate with cord jackets. (For custom colors a minimum quantity may be required.)